

re-L-accelerate

*find your focus & strength
by unwinding in the microcosm*

by Floriana

www.kunst.land



European
Commission

Beaulieu Atrium

Ave. de Beaulieu 5
1160 Brussels



re-L-accelerate

by Floriana

03. - 24. June 2014

re-L-accelerate

find your focus & strength by unwinding
in the microcosm

The neologism 're-L-accelerate' combines the words 'relax' and 'accelerate' - as an invitation.

Let me invite you to approach acceleration as a beneficial driving force - in a relaxed, healthy way. I frequently dive into the close observation on small details in my environment and surroundings - only to find many amazing microworlds around us. This gives me new perspectives, fascination, understanding, inspiration, appreciation and joy. These are universal values.

Using early 19th century photogramm methods in combination with today's high resolution scanning, I am unfolding hidden microcosms. The journey begins. Join me!

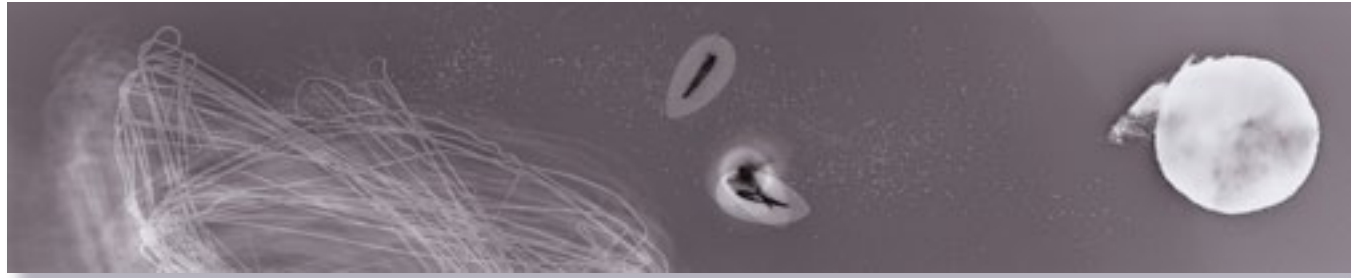
By focussing on something, which carries away our mind from its usual topics - even if it is only for a short moment - we can unwind, we calm down, we get subconsciously inspired and most importantly we can recharge.

I wish these kind of moments for the observer of my art.

Floriana M. Ohldag
www.kunst.land

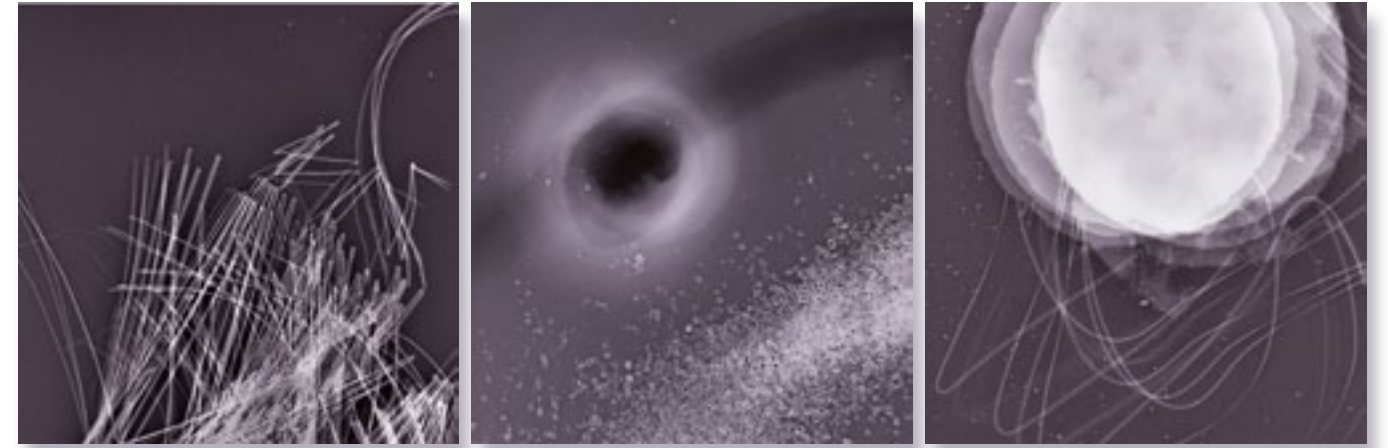
Birth - 70 x 70 cm
photo print, matte





'Floating; Anchorlessly - Searching'

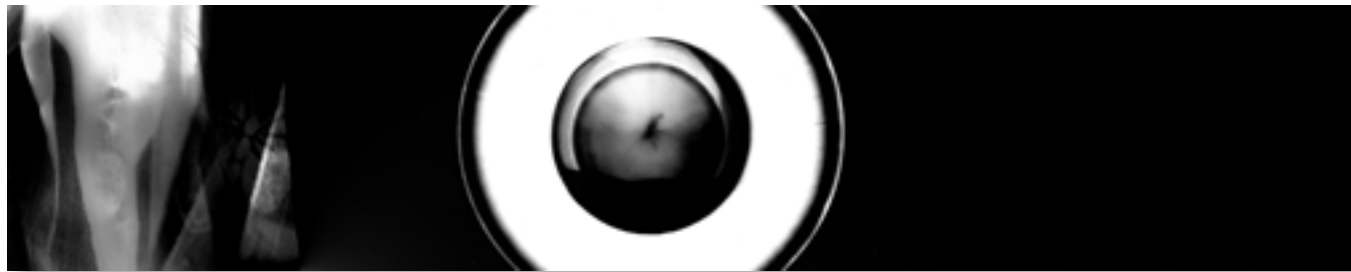
*Galaxy Gray 1 - 150 x 30 cm
authentic photo print, matte*



*GCD 1 to 3 - each 30 x 30 cm
authentic photo print, matte*

'Exploring Sub-Space; Observing;'

'Re - Focussing'



'Inner Un-Veiling'

*Focus 1 - 51 x 9 cm
authentic photogram*



*FocusD 1 to 3 - each 50 x 50 cm
photo print, matte*

"Un-Cover, Re-Cover, Leaving turmoil"

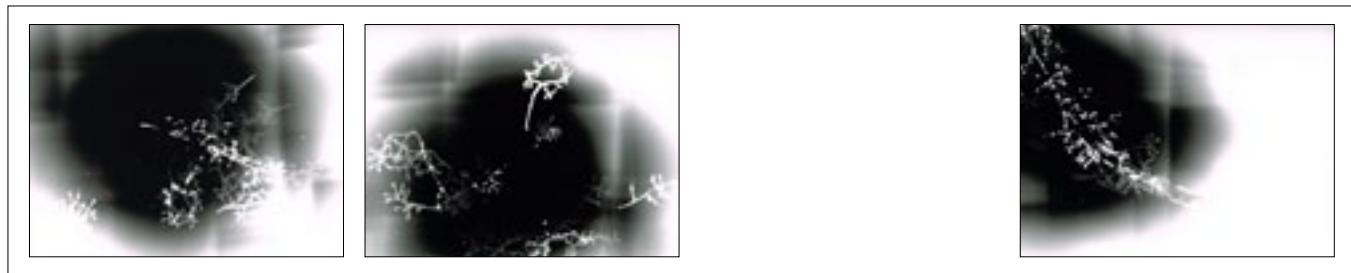


Focus here - 76 x 49 cm
acryl on re-claimed glass



Unwinding RT - 76 x 49 cm
acryl on re-claimed glass

"Airy Re-Anchoring"



'Growing Roots'

*Crystal G 1 to 3 - each 24 x 18 cm
authentic photograms*



*Crystal G 1 & 2 - 150 x 30 cm
authentic photo print, matte*

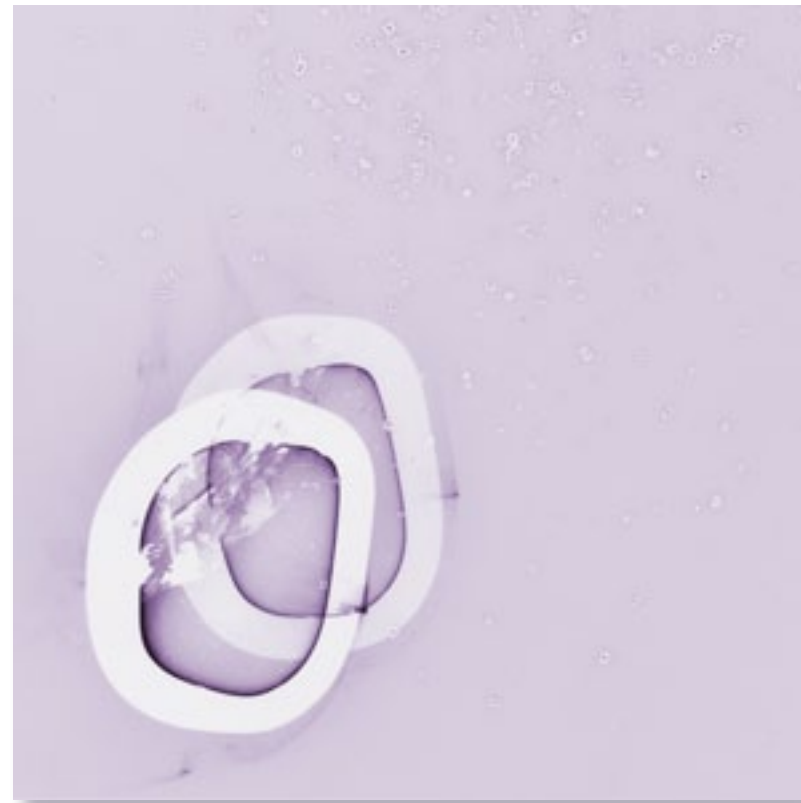
'Colours up Front'

'Feeling Light -ness'

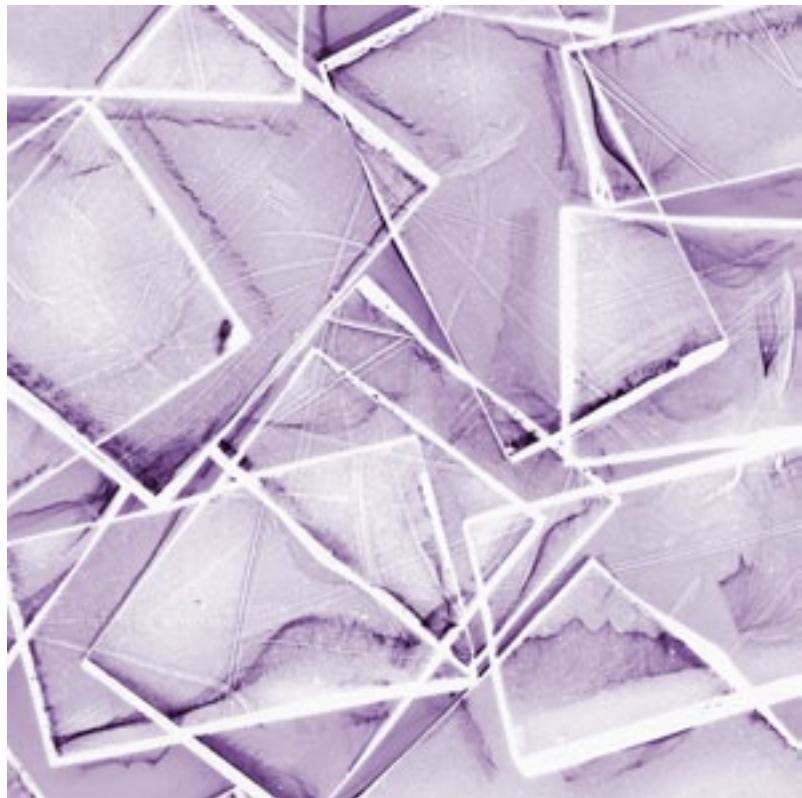


Galaxy Light Gray 1 & 2 - 51 x 16 cm
authentic photograms

'Emphasizing Light'



Firestarter - 70 x 70 cm
photo print, matte



Framework - 70 x 70 cm
photo print, matte



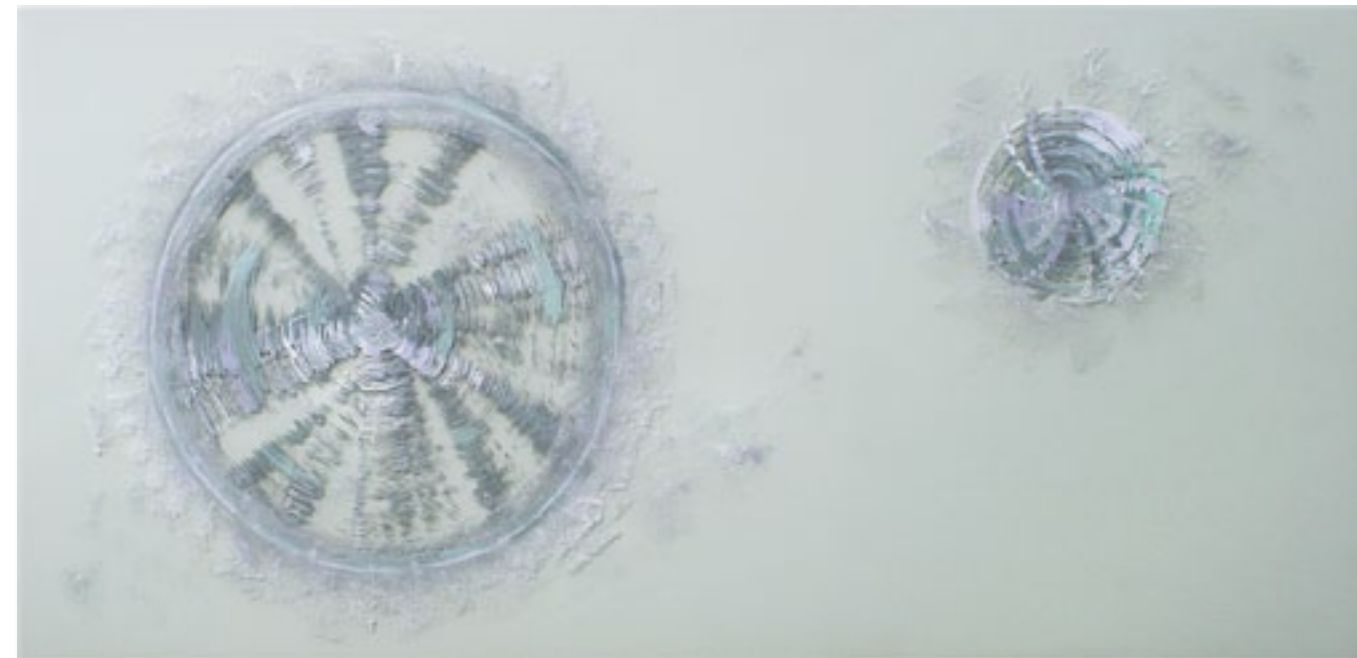
Dancer - 70 x 70 cm
photo print, matte

'Stop Framing'



'Think: Un-Clustering'

*Re-Frame - 101 x 49 cm
acryl on re-claimed glass*



'Essence-Spinning'

*Centrifuge - 101 x 49 cm
acryl on re-claimed glass*

'Growing'



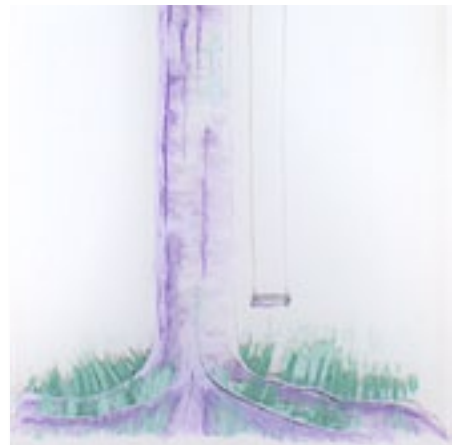
'Growing Determination'

*Sprout - 60 x 12 cm
acryl on re-claimed glass*



'Stabilising Your Self'

*Roots - 60 x 12 cm
acryl on re-claimed glass*



Just Swing, Swing - 77,5 x 24,5 cm
acryl on re-claimed glass



Just Swing, Hammock - 77,5 x 24,5 cm
acryl on re-claimed glass





*Macro-Joy 1 to 3 - each 5 x 5 cm
acryl on micro-canvas*



*Macro-Joy 4 to 6 - each 5 x 5 cm
acryl on micro-canvas*

'Just swing!'



'Bouncing; Re-'

*Galaxy Light Gray Xtra - 150 x 30 cm
authentic photo print, matte*



*Re-Birth - 70 x 70 cm
photo print, matte*

About the Artist:

Floriana M. Ohldag

As a graduate freelance-designer and artist, Floriana is the founder of the label *ko floriana- fine applied arts*. This is an artistic concept, which constructively combines the two (usually opposed) creative approaches of functional arts with fine arts. Floriana is momentarily based in Dresden, Germany, but works Europe-wide. Being a member of the Alliance of German Designers AGD she also signed "the charta of sustainability".

Floriana is the creator of the ecological state-of-the-art *EMAS Award* Trophy Sculpture for the EU Commission.

Her applied arts have already been exhibited at renowned events in New York, Los Angeles, Milan and Frankfurt/Main - all on personal invitation.

Floriana's passion for creativity and attentiveness has been a golden thread throughout her career life and her work of art. Her first career as a film producer & editor was topped up by a master degree in applied arts studies in 2011 - in order to follow her dream of working even more creatively.



re-L-accelerate
by Floriana

www.kunst.land



www.kofloriana.com

This exhibition is organised in co-operation with OIB (Office for Infrastructure and Logistics, Brussels) - European Commission. Catalogue and posters printed by OIB.

All rights reserved. No part of this booklet may be reproduced or utilised in any form or by any means without written permission. photos & layout © Floriana M. Ohldag. Disclaimer: photo page 38 © Javier-Bernal-Revert/EU Commission.

The background is a complex, abstract composition. It features a base of muted purple and lavender tones. Overlaid on this are numerous white and light purple geometric shapes, including triangles, squares, and irregular polygons, some of which are partially transparent or layered. There are also fine, white, fibrous or thread-like textures scattered throughout, creating a sense of depth and movement. The overall effect is that of a layered, textured surface, possibly resembling a microscopic view or a digital collage.

re-L-accelerate

*find your focus & strength
by unwinding in the microcosm*

by Floriana

www.kunst.land